

VATICAN · GALLERY

COLLECTION

porcelain tile



Italian craftsmanship
MADE IN THE USA



recycled content



VATICAN • GALLERY COLLECTION

Inspired from timeless Vatican City artwork hand-crafted by the greatest of Renaissance artisans, Mediterranea unveils a new masterpiece: The Vatican Gallery Collection. This glazed porcelain tile range emulates the warm texture of time-worn plaster and the rich imagery of ancient frescos. Cutting-edge technology and meticulous attention to detail together create a unique marriage of color and shading, resulting in an exquisite, three-dimensional trompe l'oeil effect.



GIOTTO
[gold]

Conceived with the same majestic feeling and golden tones which adorn the Vatican's sprawling Apostolic palace complex, each tile is infused with a variety of masterfully-blended colors.







DA VINCI [terracotta]

With a harmony of tones and shading reminiscent of historic frescoes, this tile lends a bright and airy ambience to any room. Working as either a fashionable focal point or a refined backdrop, Da Vinci indeed makes a design statement.





MICHELANGELO

{grey}

Beautifully echoing the great master's stone fresco ceilings in the Sistine Chapel, the cool tones of this magnificent tile are dappled by colorful hints of wheat and wine. A perfect choice for both period and/or contemporary installations.





BOTTICELLI [beige]

A deep, sandy body accented with silvery white and earthy beige veining is an ideal choice when adding an aura of understated elegance to any design, ranging from intimate to lofty.

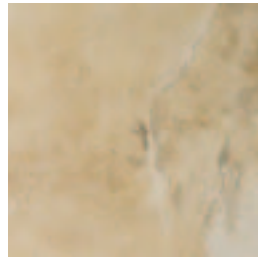


GIOTTO

{gold}



20" X 20"



13" X 13"



9.75" X 20"



6.5" X 6.5"

DA VINCI

{terracotta}



20" X 20"



13" X 13"



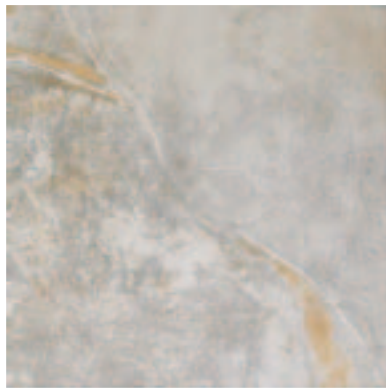
9.75" X 20"



6.5" X 6.5"

MICHELANGELO

{grey}



20" X 20"



13" X 13"



9.75" X 20"



6.5" X 6.5"

BOTTICELLI

{beige}



20" X 20"



13" X 13"



9.75" X 20"

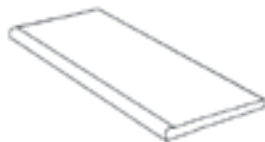
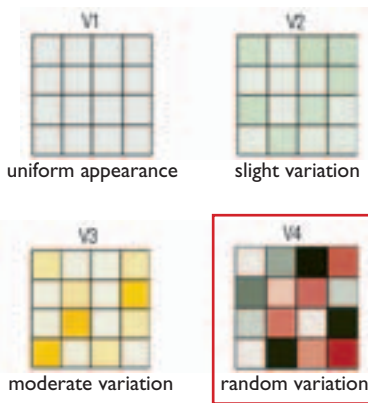


6.5" X 6.5"

PACKING SPECIFICATION TABLE

Names (Colors)	Sizes (inches)	Catalog Number	Tile Per Carton	CTN per Pallet	One CTN Sq. Ft.	One PLT Sq. Ft.	Tile Thickness
Ex-Factory Florence, Alabama							
BOTTICELLI (Beige)	20X20	A466	6	24	16.15	387.6	11
MICHELANGELO (Grey)	20X20	A467	6	24	16.15	387.6	11
GIOTTO (Gold)	20X20	A468	6	24	16.15	387.6	11
DA VINCI (Terracotta)	20X20	A469	6	24	16.15	387.6	11
BOTTICELLI (Beige)	13X13	A470	13	42	15.51	651.84	10
MICHELANGELO (Grey)	13X13	A471	13	42	15.51	651.84	10
GIOTTO (Gold)	13X13	A472	13	42	15.51	651.84	10
DA VINCI (Terracotta)	13X13	A473	13	42	15.51	651.84	10
BOTTICELLI (Beige)	6.5 x 6.5	A474	32	51	9.38	478.38	10
MICHELANGELO (Grey)	6.5 x 6.5	A475	32	51	9.38	478.38	10
GIOTTO (Gold)	6.5 x 6.5	A476	32	51	9.38	478.38	10
DA VINCI (Terracotta)	6.5 x 6.5	A477	32	51	9.38	478.38	10
BOTTICELLI (Beige)	9.75 x 20	A478	10	28	13.35	372.98	11
MICHELANGELO (Grey)	9.75 x 20	A479	10	28	13.35	372.98	11
GIOTTO (Gold)	9.75 x 20	A480	10	28	13.35	372.98	11
DA VINCI (Terracotta)	9.75 x 20	A481	10	28	13.35	372.98	11

SHADE VARIATION



Bullnose 3" X 13"

TECHNICAL SPECIFICATION TABLE

	Characteristics	Vatican Series
	PEI	4
	Breaking Strength	20 x 20 255KG 13 x 13 233KG
	Chemical Resistance	Acid & Base: Excellent
	Water Absorption	20 x 20 .09% 13 x 13 .23%
	MOHS	6
	C.O.F.	Dry .70 Wet .62
	Modules of Rupture	20 x 20 480KG/CM_(11MM) 13 x 13 490KG/CM_(10MM)

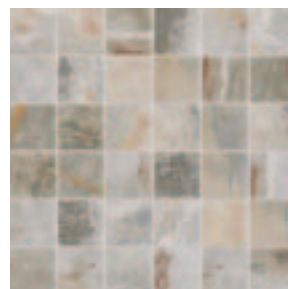
MOSAICS



Giotto 13" X 13"



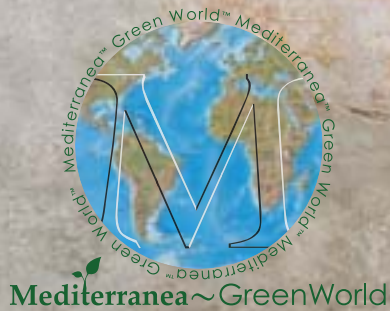
DaVinci 13" X 13"



Michelangelo 13" X 13"



Botticelli 13" X 13"



Mediterranea's Masterpiece for the Ages!!

Just as the Vatican paintings have carried through the ages, Mediterranea's "Vatican Gallery" is sophisticated in appearance and durability, bringing Renaissance history into any home. Designed in Italy and produced in the United States, "Vatican gallery" was created with state-of-the-art, technological advances, raising the standards of porcelain tile manufacturing in the United States.

Materials & Resources: Regional Materials

MR Credit 5 [1 or 2 points]

Our USA factories are located within 500 miles of many major markets and use local, abundant resources.



- **Made in the USA**
- **21% recycled content**
- **Suitable for commercial applications**

Italian craftsmanship
MADE IN THE USA



recycled content

